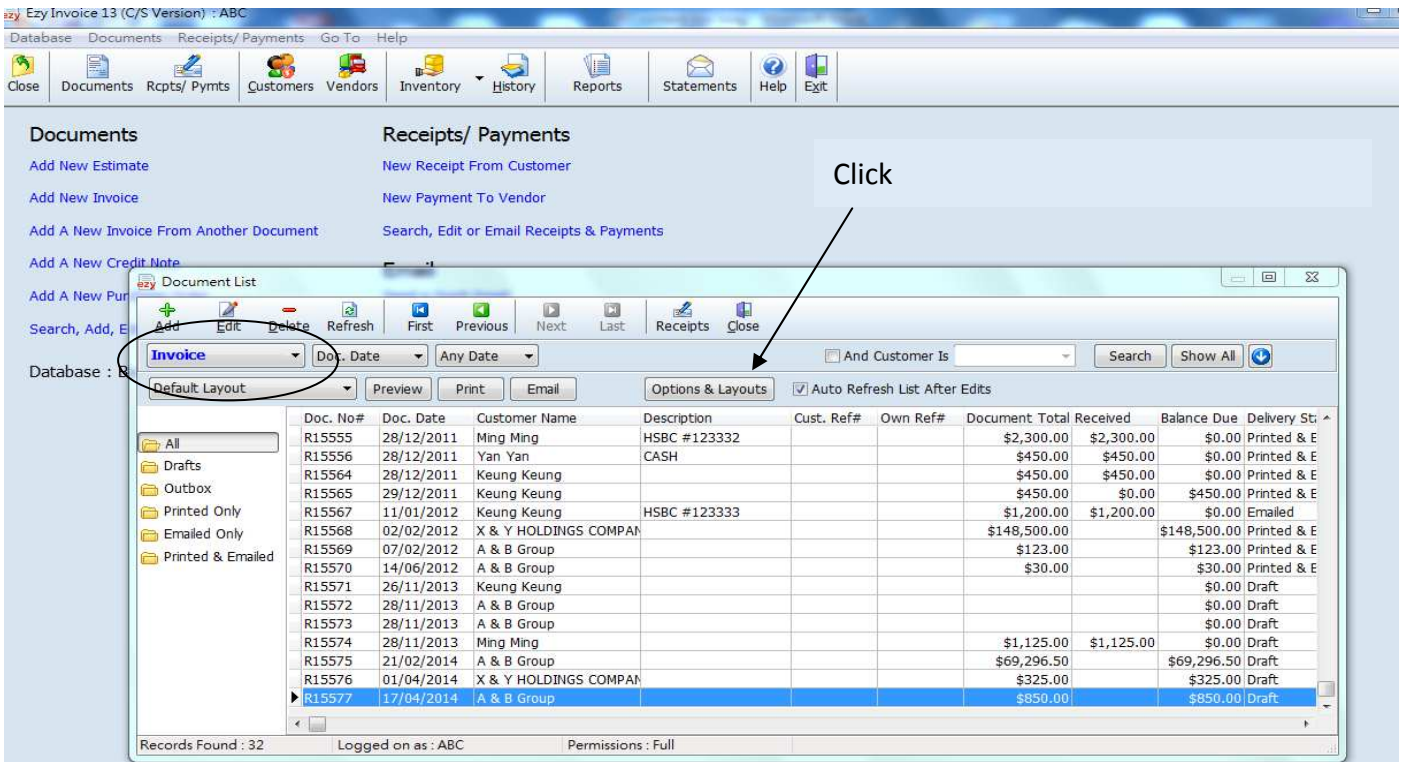
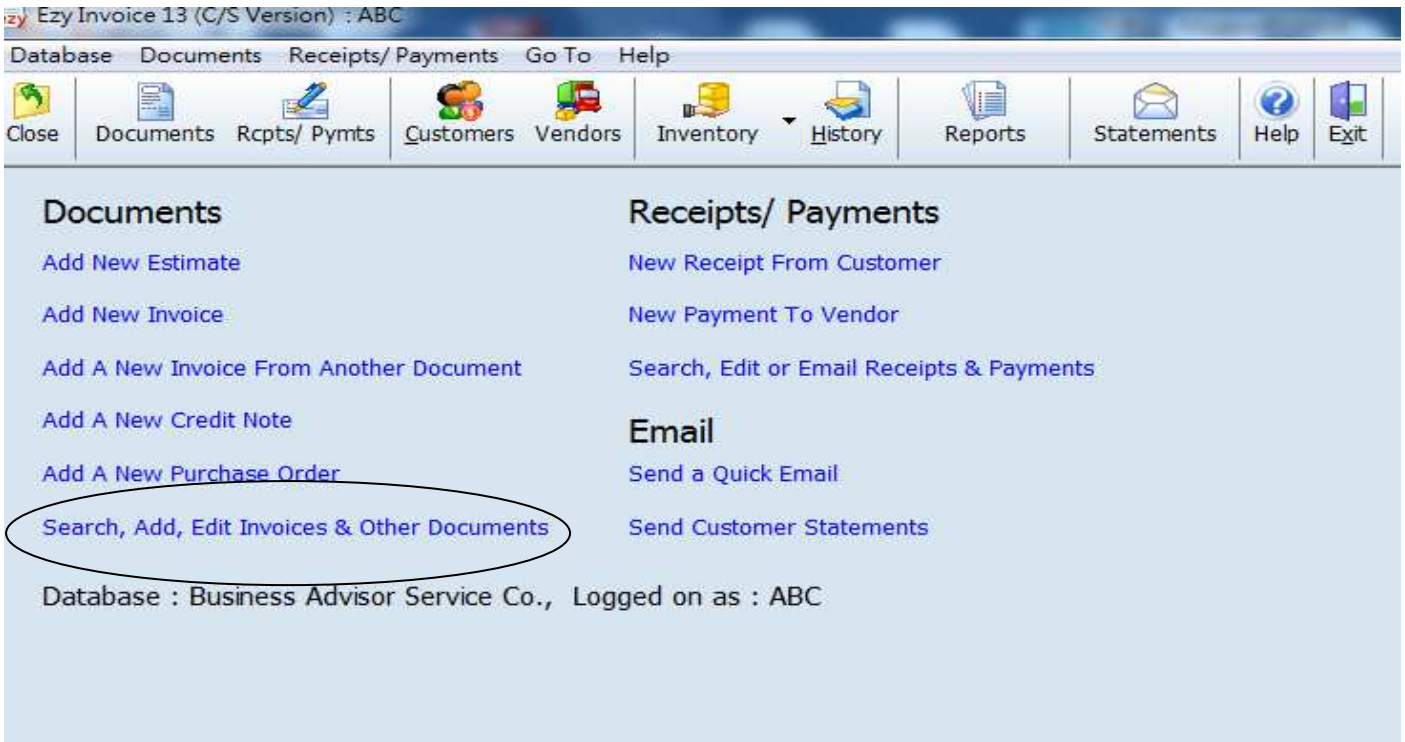
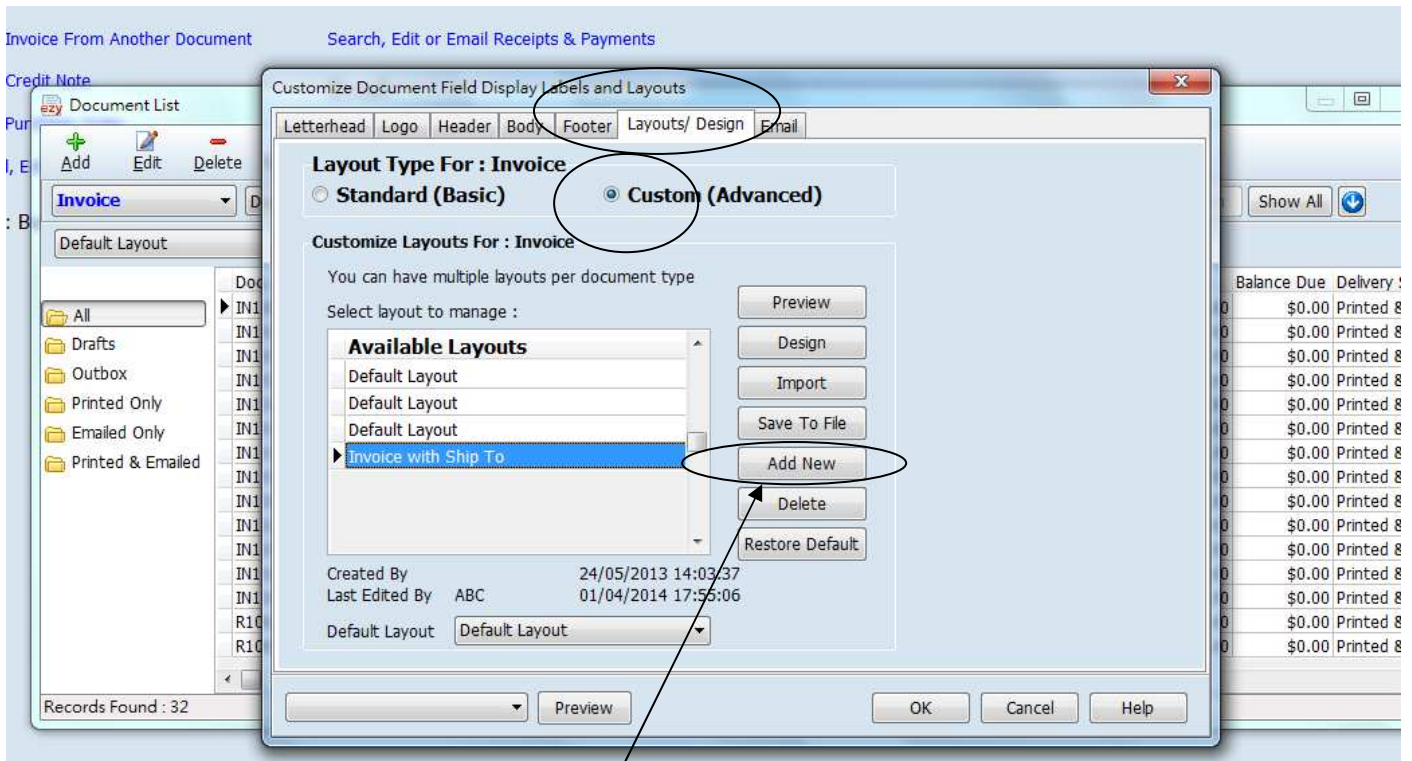


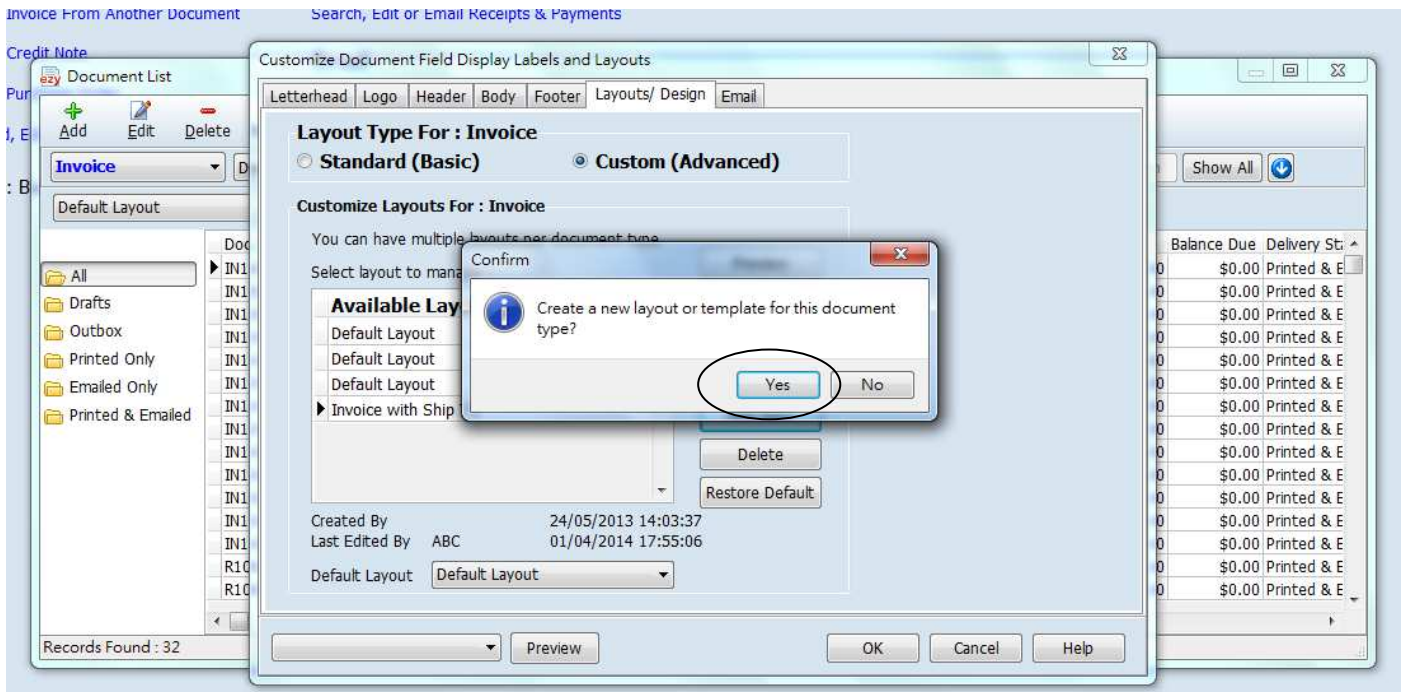
How to copy a new Layout from the existing Invoice Layout?



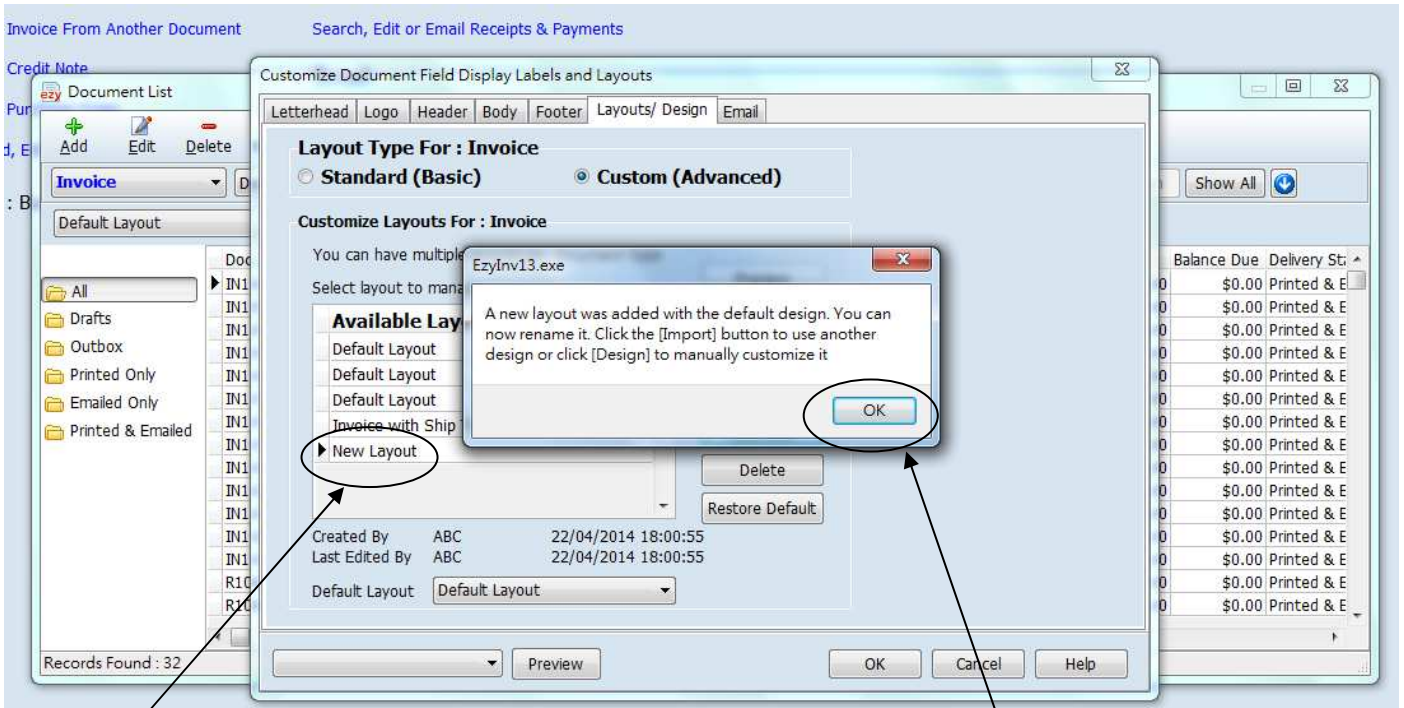
# EZY Invoice 13



Click [Add New]

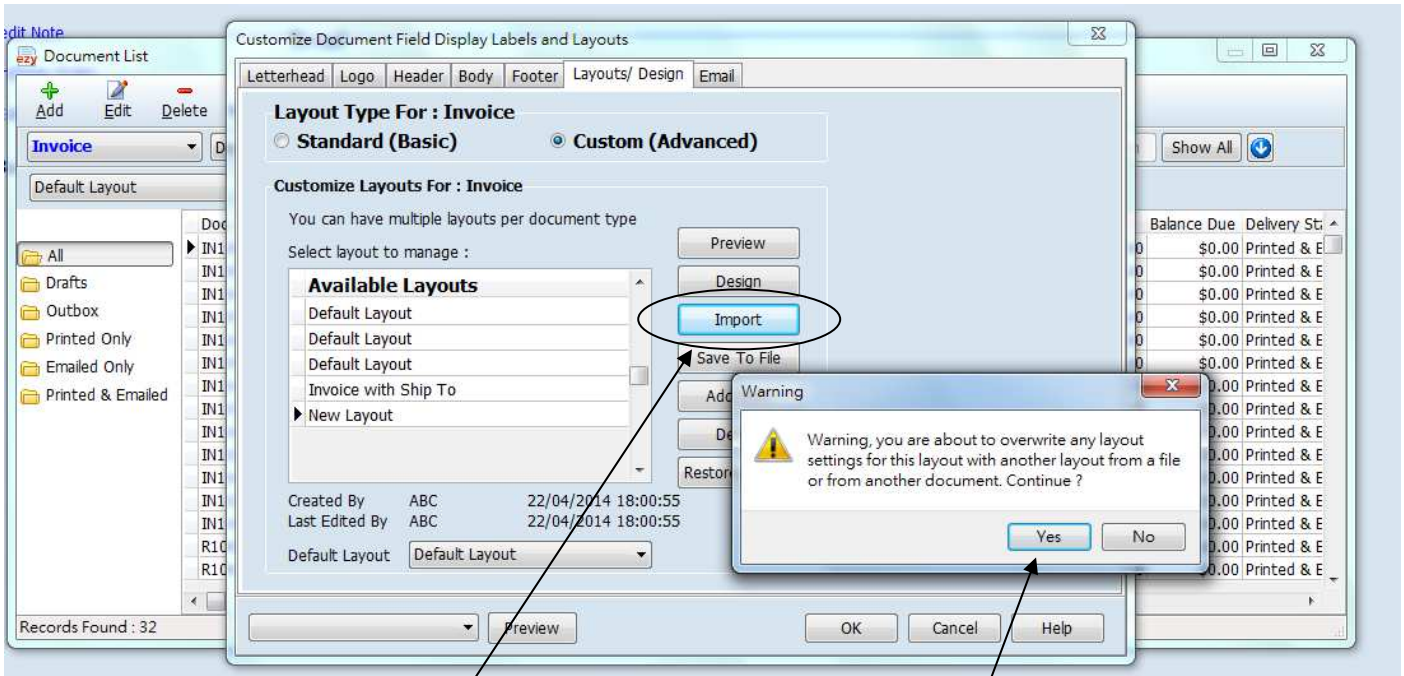


# EZY Invoice 13



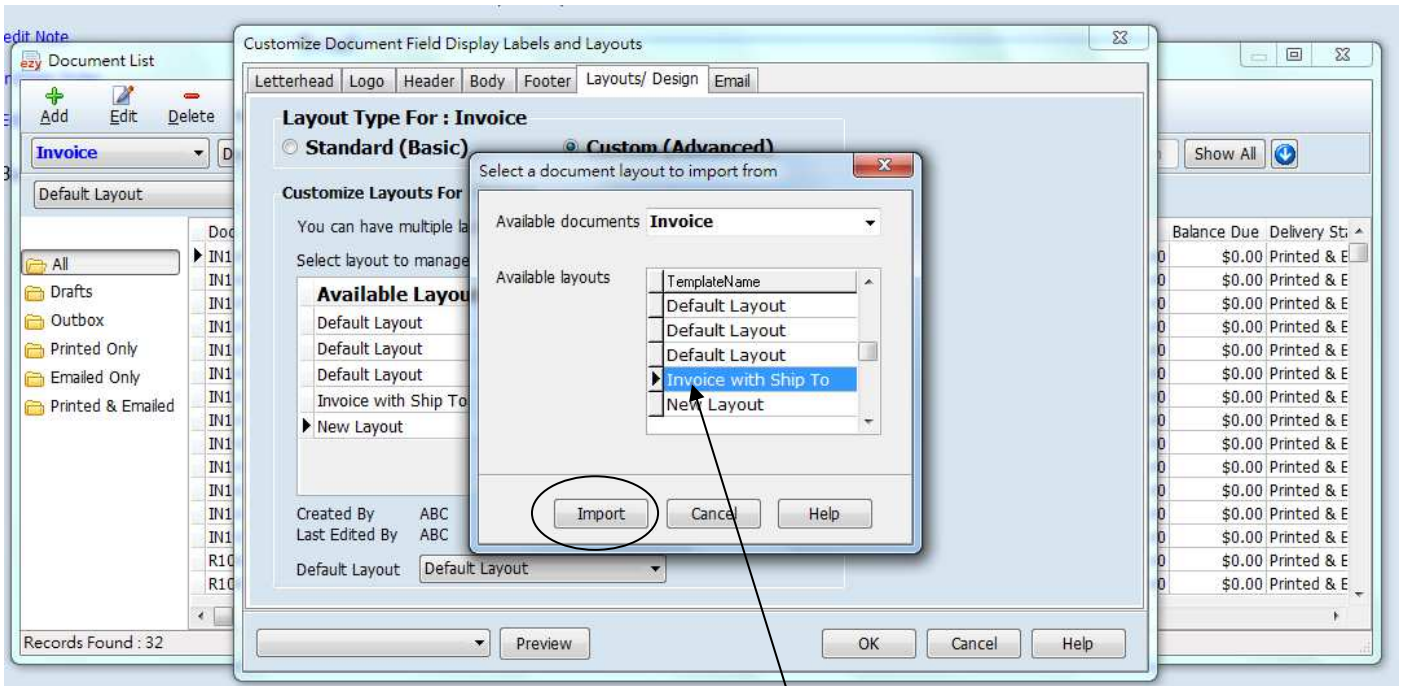
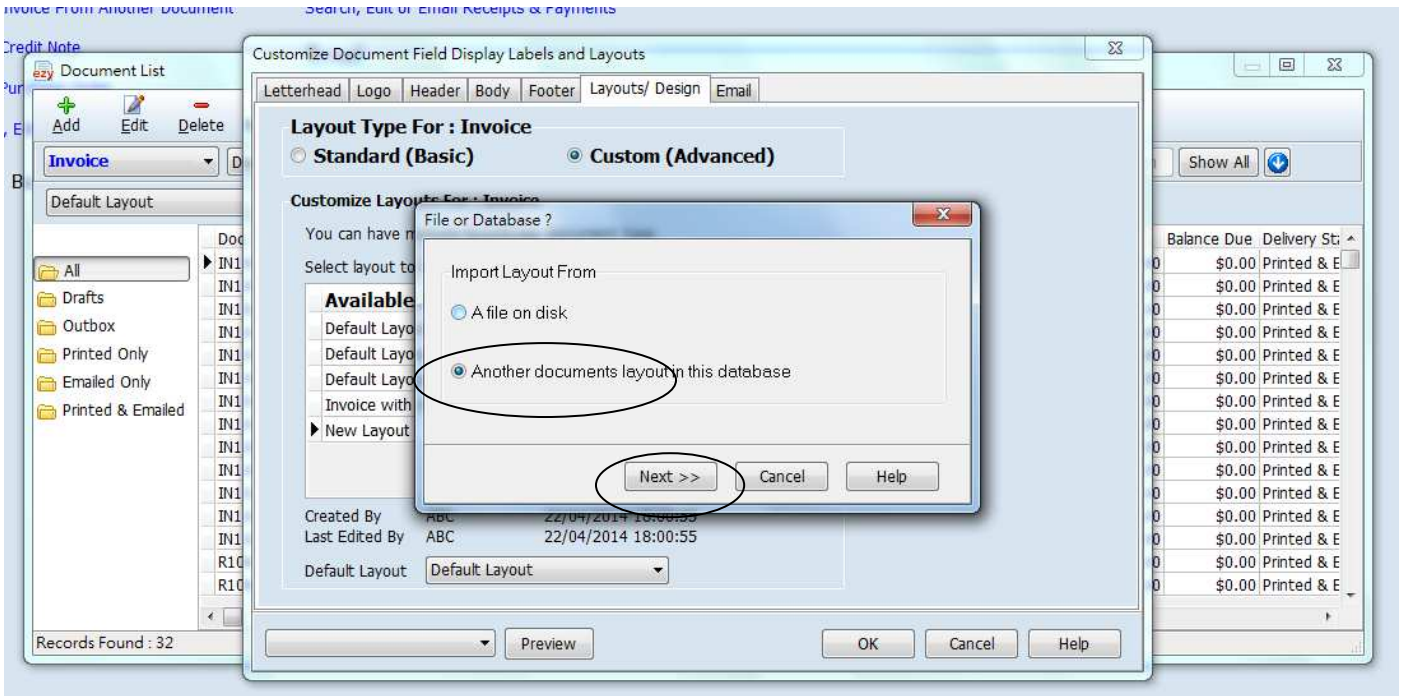
This is a new layout with default design

Click [OK]



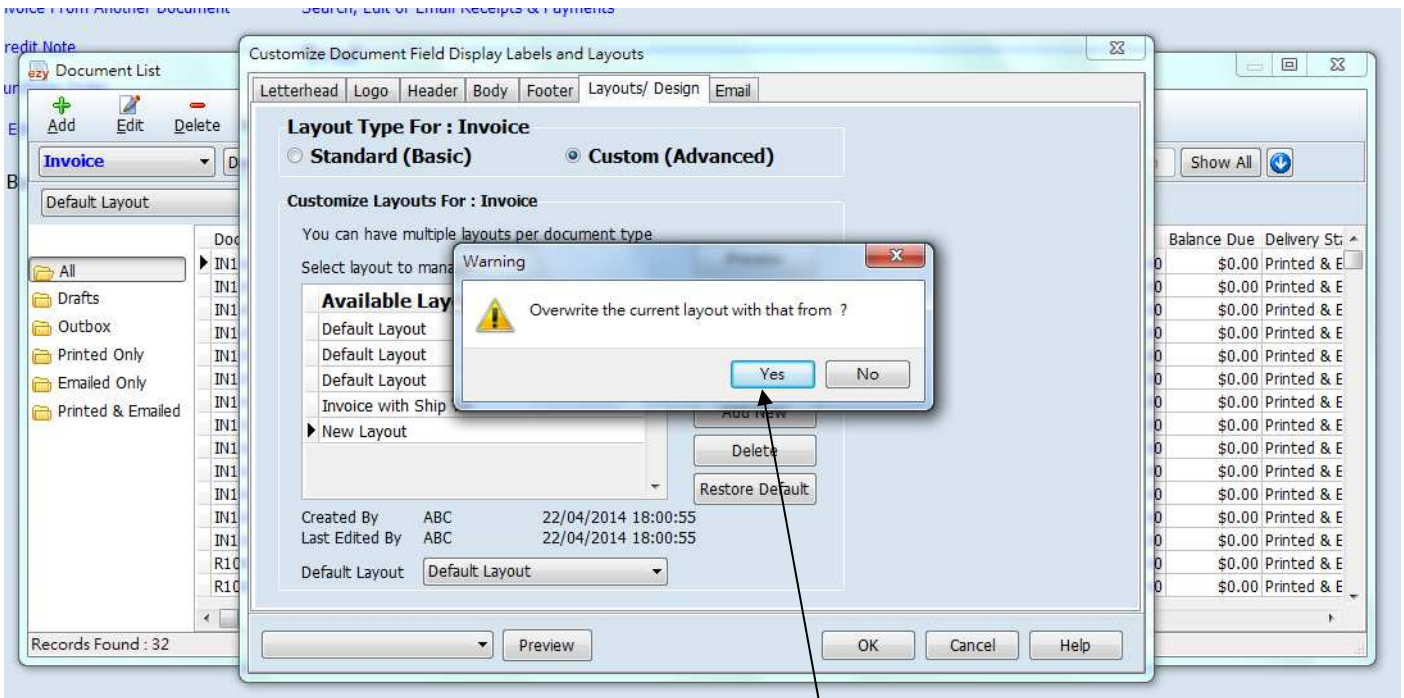
Click [Import], Warning message pop out, click [Yes]

# EZY Invoice 13

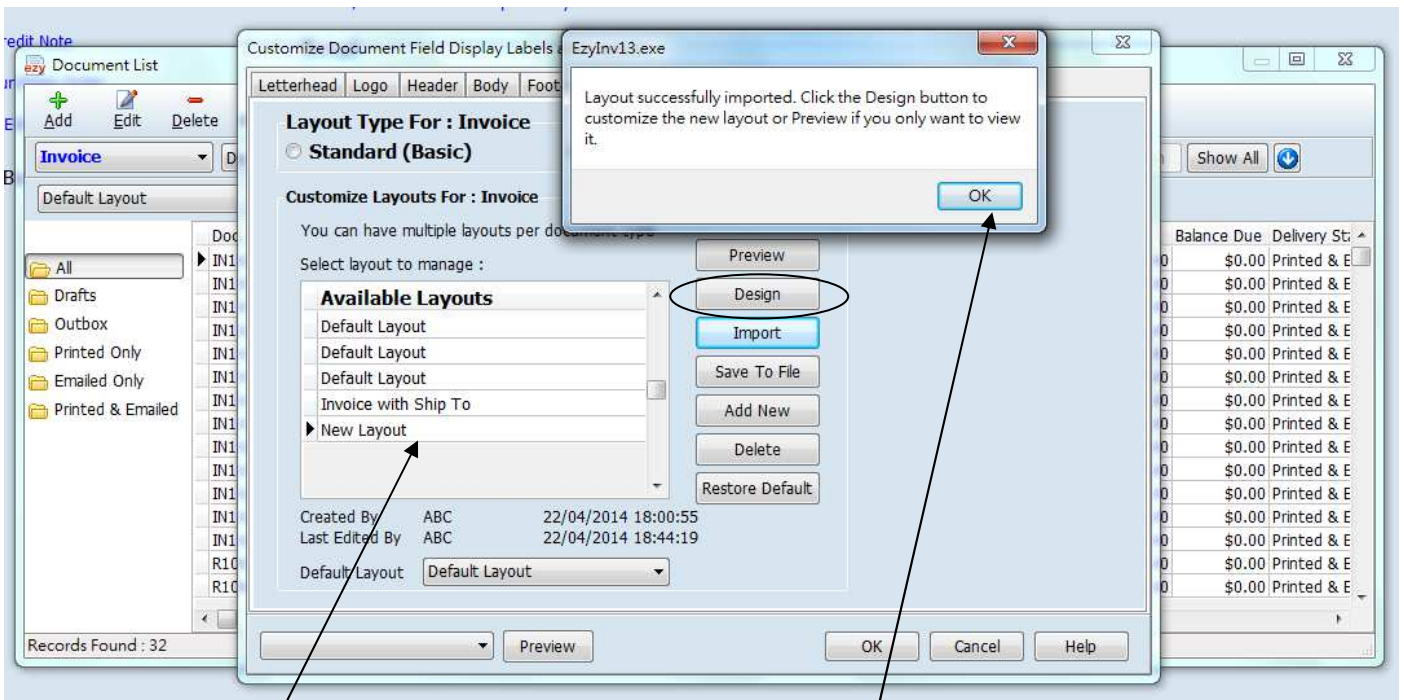


Point to existing layout which design is suitable for the new layout, click [Import] button

# EZY Invoice 13



Click



Click [OK] first

Then, point to the New Layout and click [Design]